

RESIDENCE
OIKOS
A UVRIER



UVRIER - EST

Commune de Sion

novembre 2019

Situation

Quartier "Digue de la Lienne", 1958 Uvrier

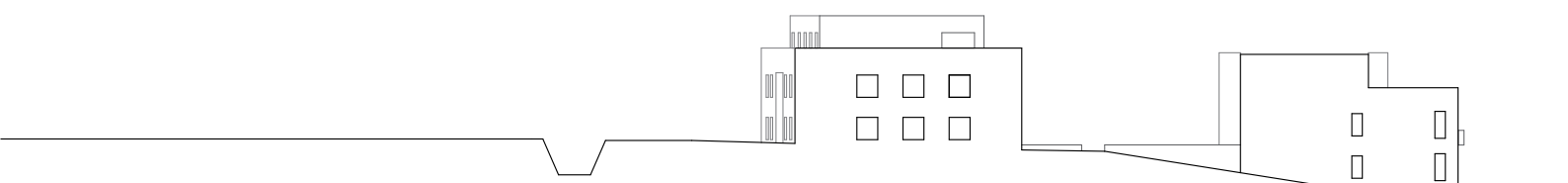


1 Gare de St-Léonard

2 Zone commercial Uvrier (supermarché, boutiques, restaurant...)

3 Ecole primaire, crèche, UAPE, EMS

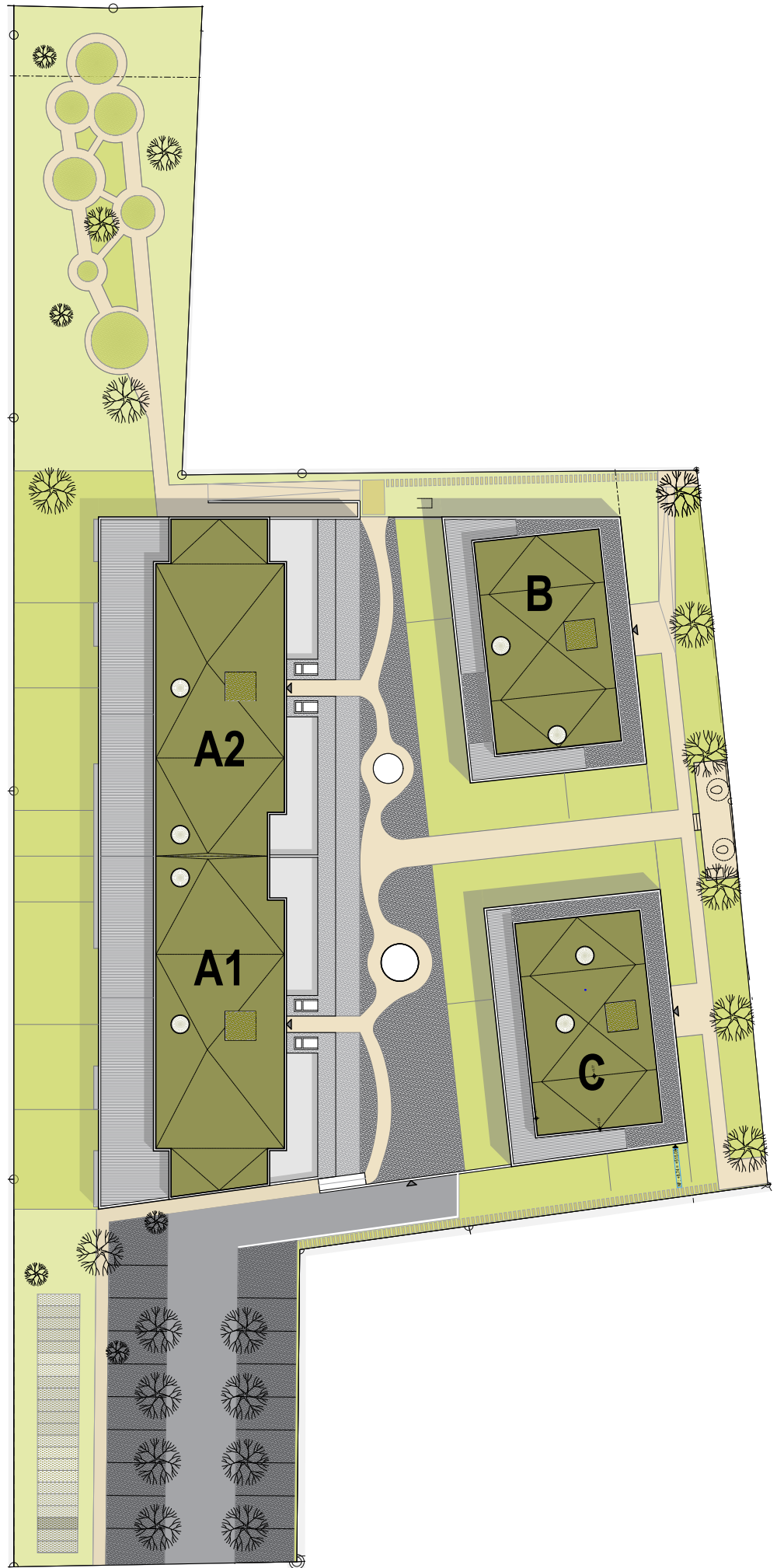
4 Sport, détente, loisir



RESIDENCE
OIKOS
A UVRIER



VUE D'ENSEMBLE



0 10 20

RESIDENCE

OIKOS

AUVRIER



BATIMENT

A

A1

A2



FACADE EST

B

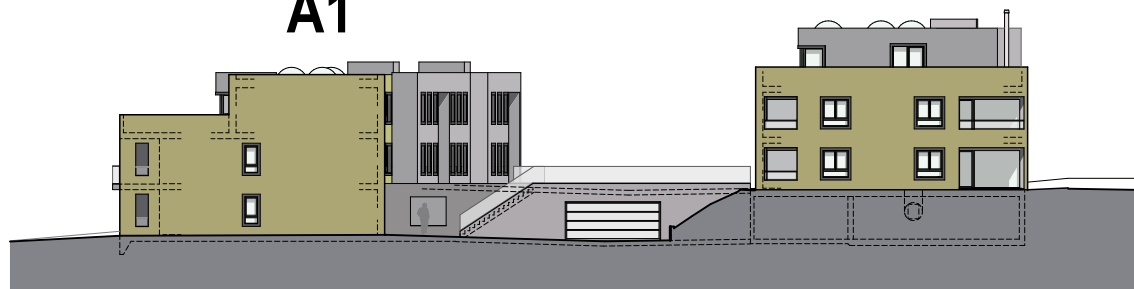
A2



FACADE NORD

A1

C



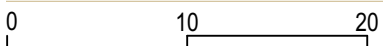
FACADE SUD

A2

A1



FACADE OUEST



RESIDENCE

OIKOS

A UVRIER



BATIMENT

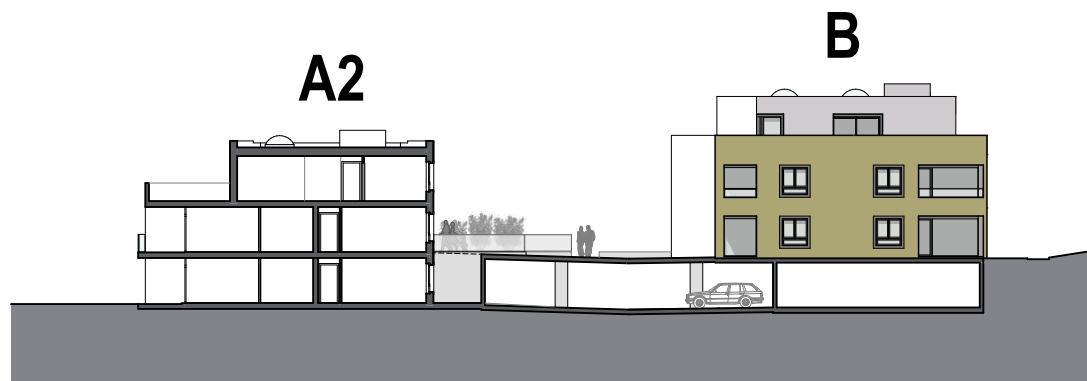
B



FACADE OUEST



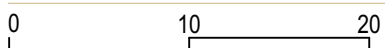
FACADE NORD



FACADE SUD



FACADE EST

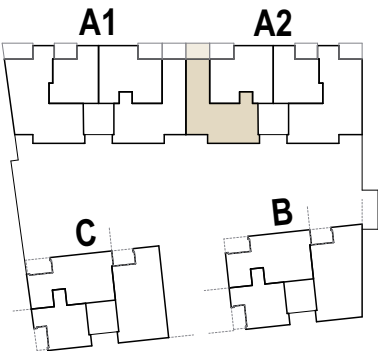
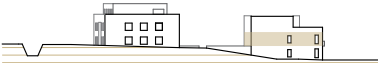
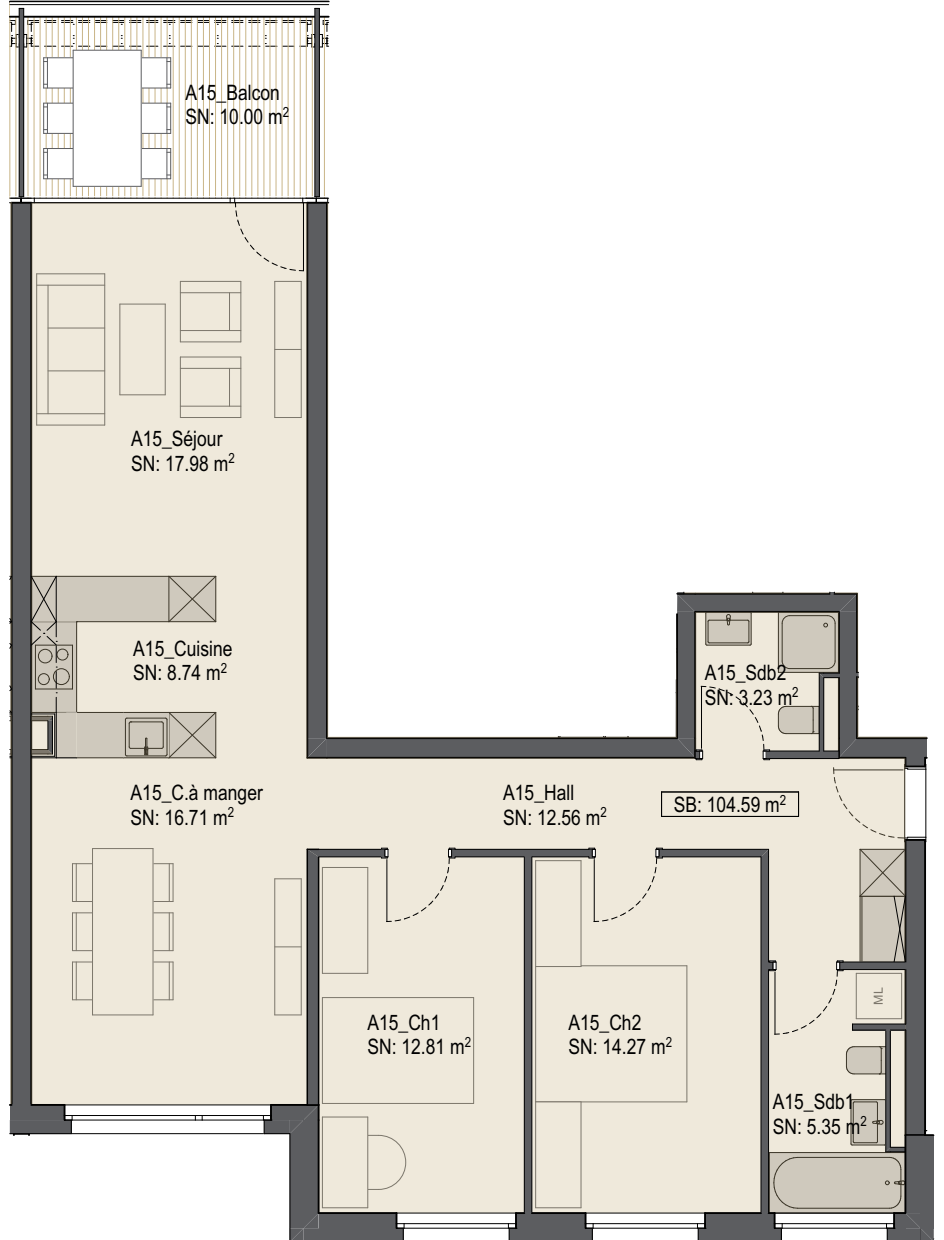


RESIDENCE OIKOS A UVRIER



Appartement n° **A15**

Nombre de pièces	3.5
Surface nette	91.65 m ²
Surface brute	104.59 m ²
Terrasse	10.00 m ²
Surface pondérée (sb + 1/2 terrasse)	109.59 m ²

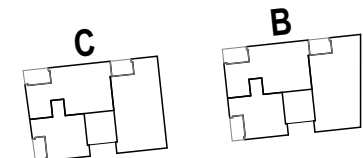
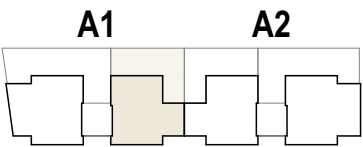
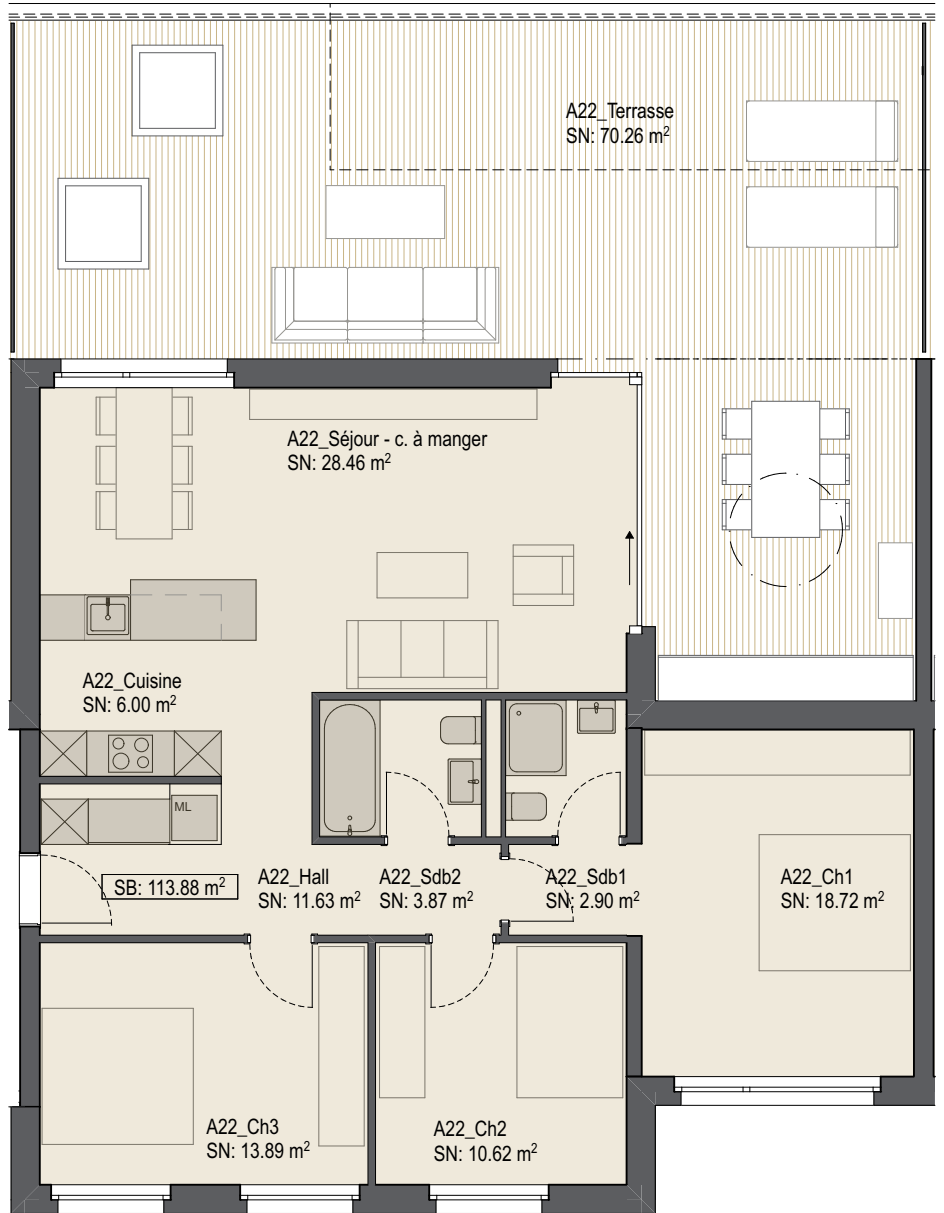


RESIDENCE OIKOS A UVRIER



Appartement n° **A22**

Nombre de pièces	4.5
Surface nette	96.09 m ²
Surface brute	113.88 m ²
Terrasse	70.26 m ²
Surface pondérée (sb + 1/4 terrasse)	131.44 m ²

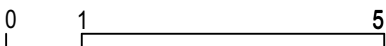
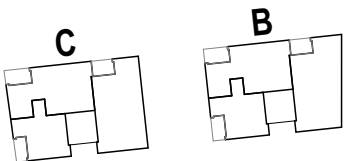
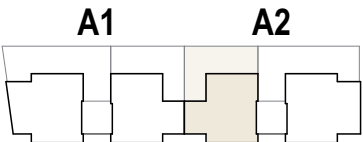
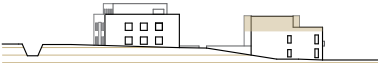
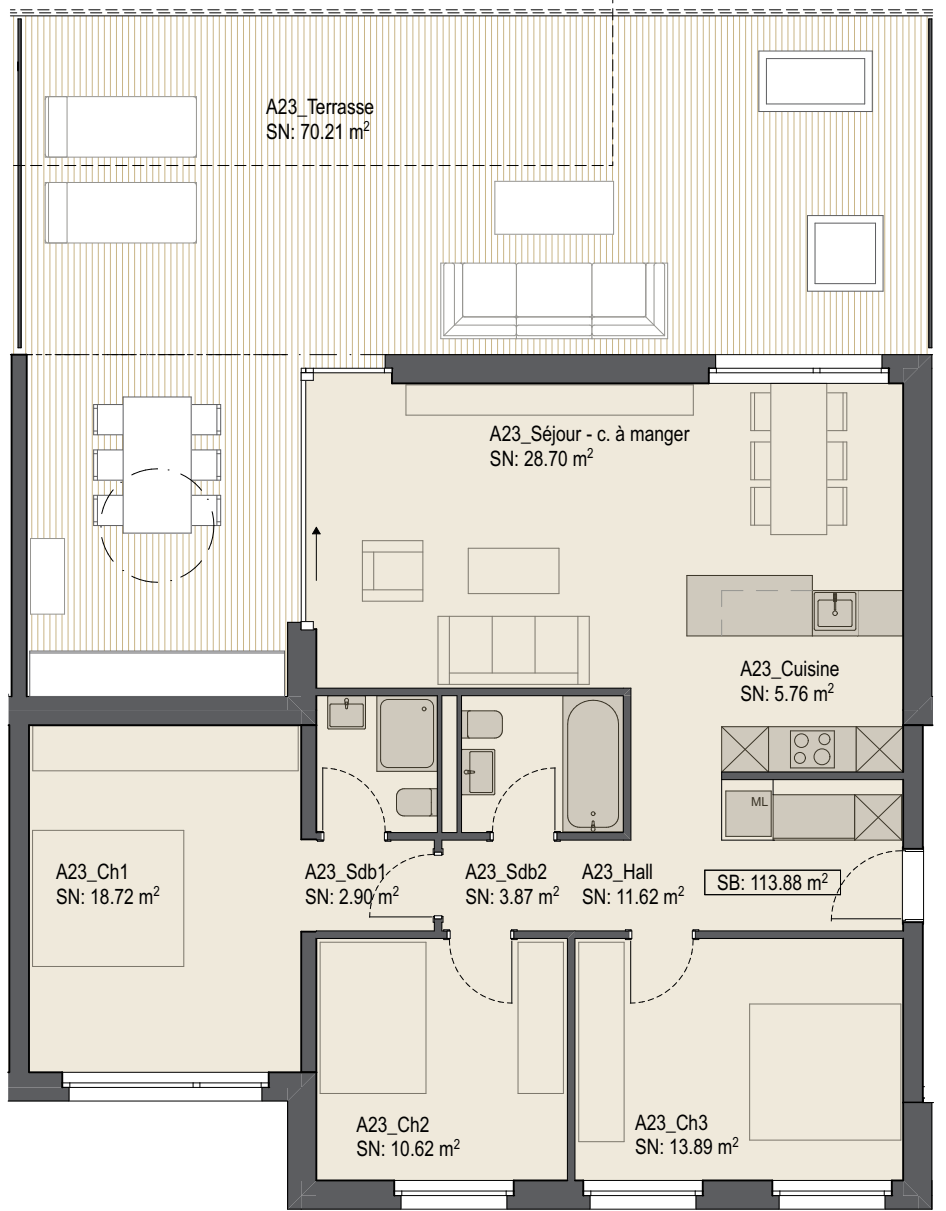


RESIDENCE OIKOS A UVRIER



Appartement n° **A23**

Nombre de pièces	4.5
Surface nette	96.08 m ²
Surface brute	113.88 m ²
Terrasse	70.21 m ²
Surface pondérée (sb + 1/4 terrasse)	131.43 m ²

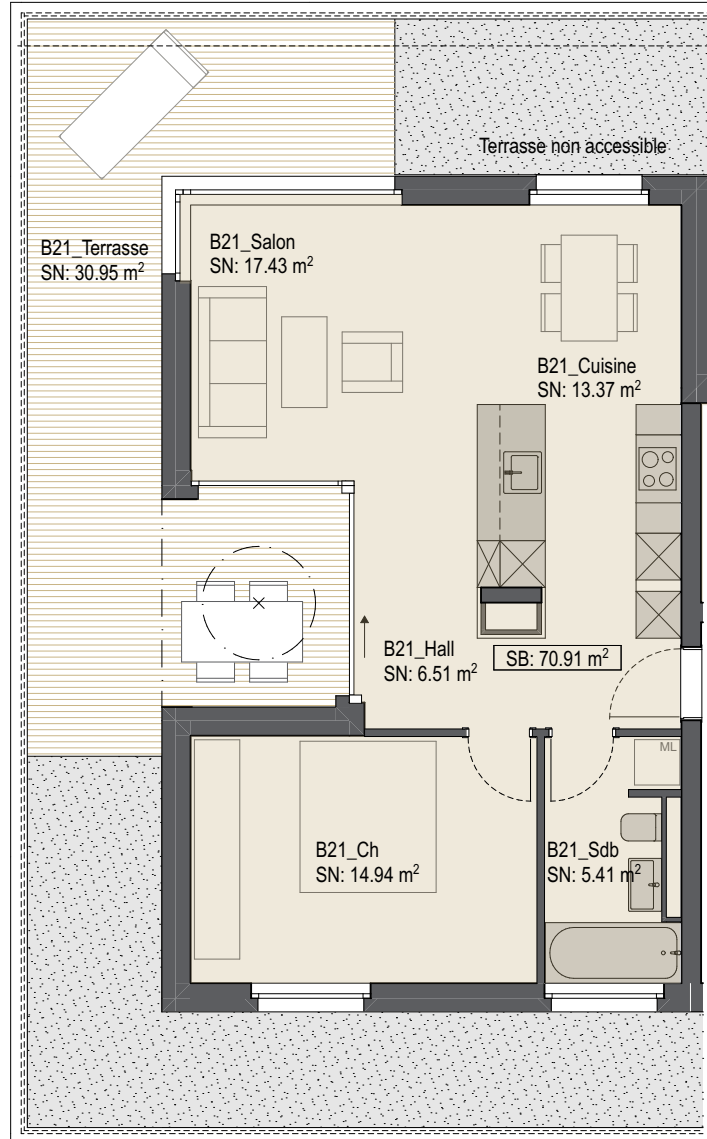


RESIDENCE OIKOS A UVRIER



Appartement n° B21

Nombre de pièces	2.5
Surface nette	58.61 m ²
Surface brute	70.91 m ²
Terrasse	30.95 m ²
Surface pondérée (sb + 1/4 terrasse)	78.65 m ²



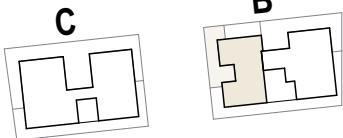
A1

A2



C

B



RESIDENCE OIKOS A UVRIER



PARKING / CAVES

