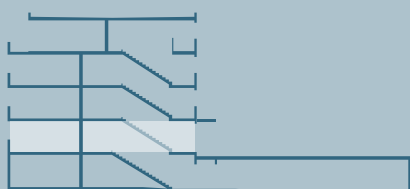
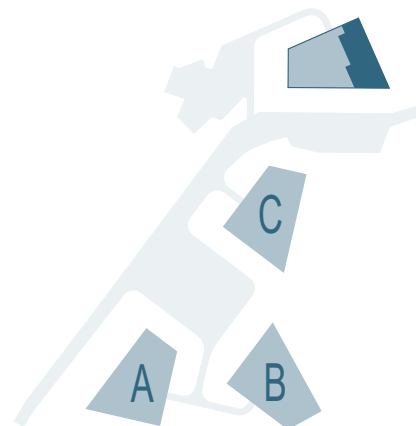


RESIDENCES TANGRAM

APPARTEMENT n° **D01**

PIECES 4.5

SURFACE NETTE	99.90 m ²
SURFACE BRUTE	118.75 m ²
BALCON-TERRASSE	14.80 m ²
SBP + 1/2 balcon-terrasse	126.15 m ²



D01
novembre 2020

