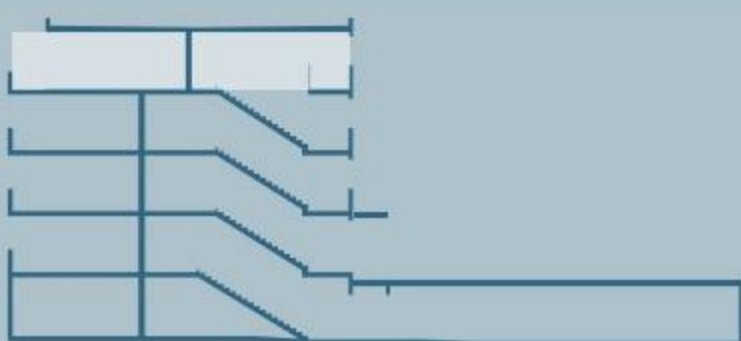
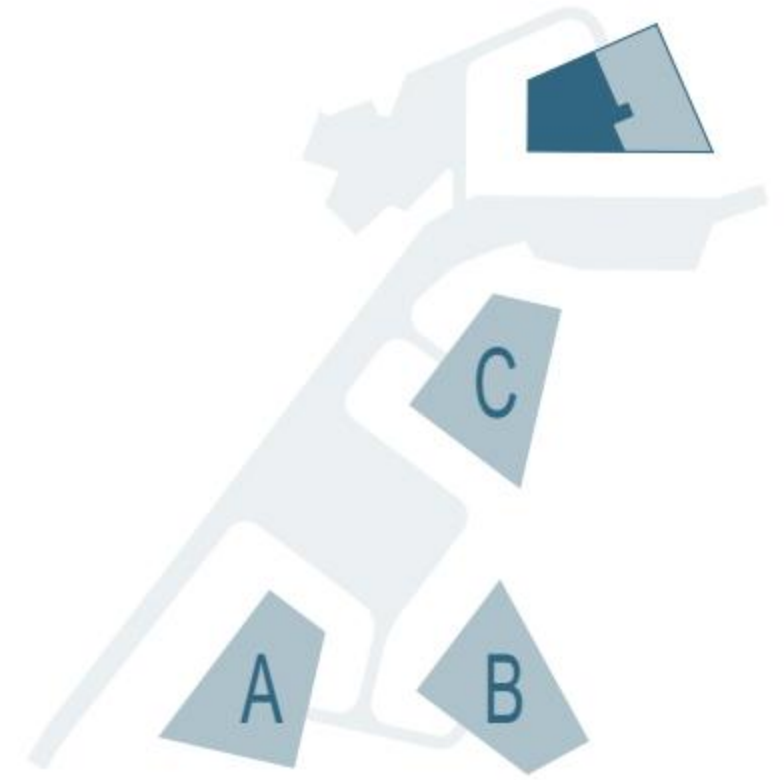


# RESIDENCES TANGRAM

APPARTEMENT n° **D32**

PIECES 3.5

SURFACE NETTE	97.80 m <sup>2</sup>
SURFACE BRUTE	116.90 m <sup>2</sup>
BALCON-TERRASSE	31.60 m <sup>2</sup>
SBP + 1/2 balcon-terrasse	132.70 m <sup>2</sup>



0 1 5



D32  
novembre 2020