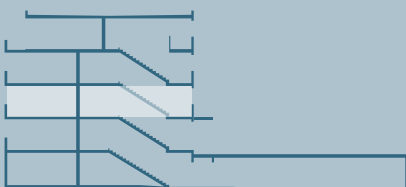
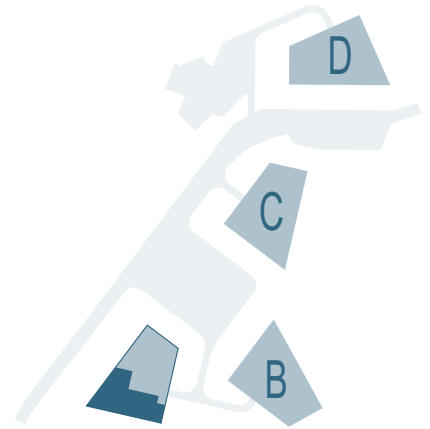


RESIDENCES TANGRAM

APPARTEMENT n° **A11**

PIECES 5.5

SURFACE NETTE 111.70 m²
SURFACE BRUTE 133.80 m²
BALCON-TERRASSE 14.60 m²
SB P + 1/2 balcon-terrasse 141.10 m²



0 1 5



A11
juin 2020