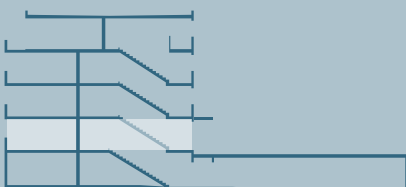
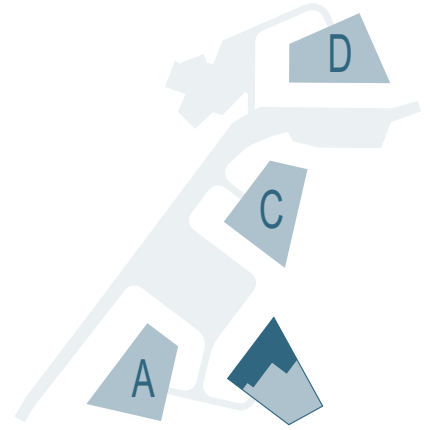


RESIDENCES TANGRAM

APPARTEMENT n° **B01**

PIECES 5.5

SURFACE NETTE 111.70 m²
SURFACE BRUTE 133.60 m²
BALCON-TERRASSE 14.80 m²
SBP + 1/2 balcon-terrasse 141.00 m²



B01
juin 2020

0 1 5

