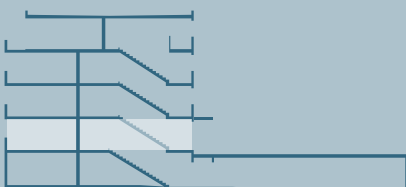
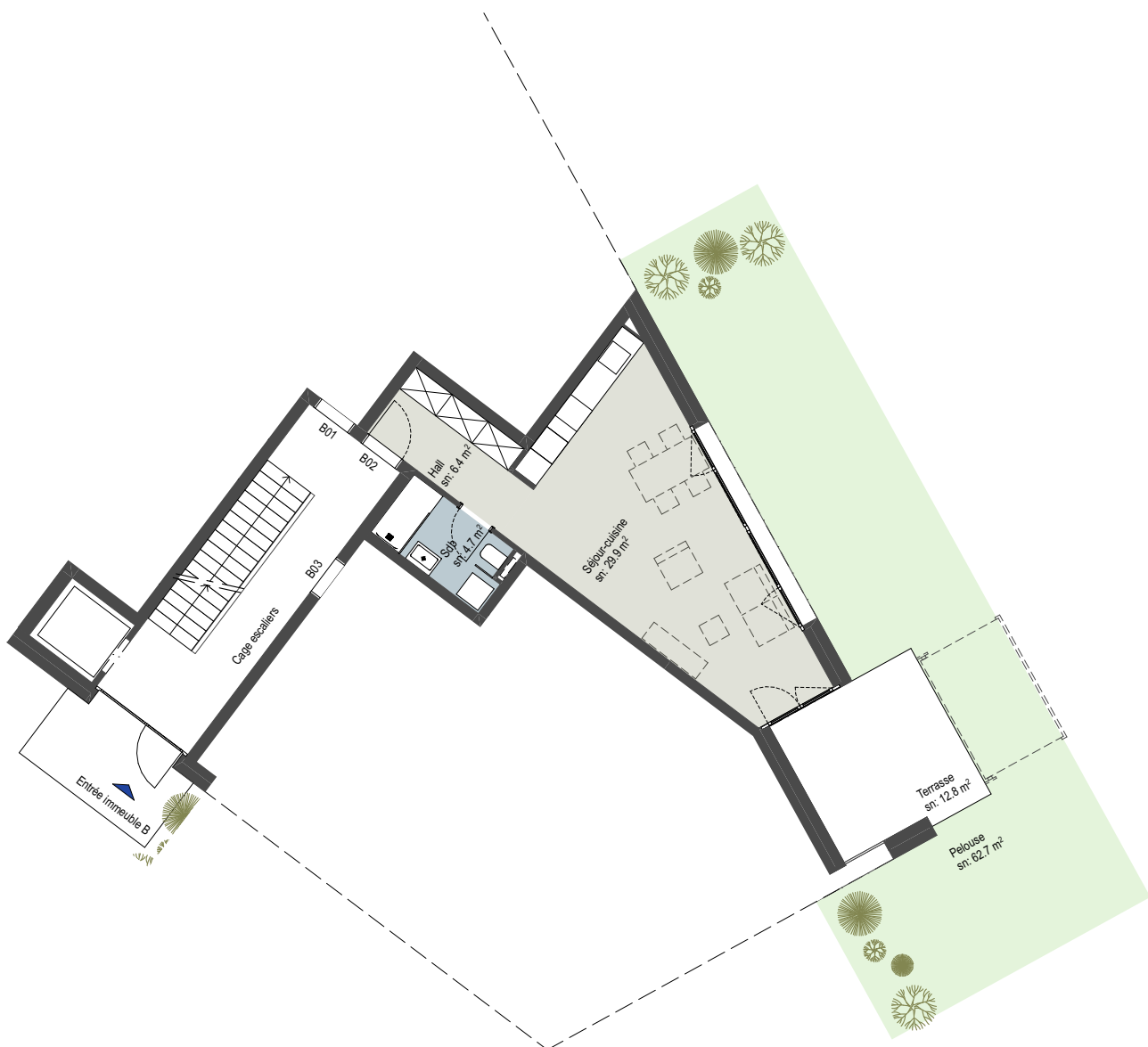
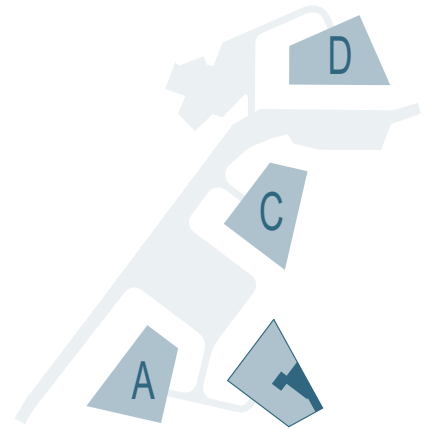


RESIDENCES TANGRAM

APPARTEMENT n° **B02**

PIECES 15

SURFACE NETTE	41.00 m ²
SURFACE BRUTE	49.55 m ²
BALCON-TERRASSE	12.80 m ²
SBP + 1/2 balcon-terrasse	55.95 m ²



B02
juin 2020

0 1 5

