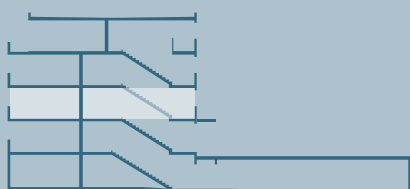
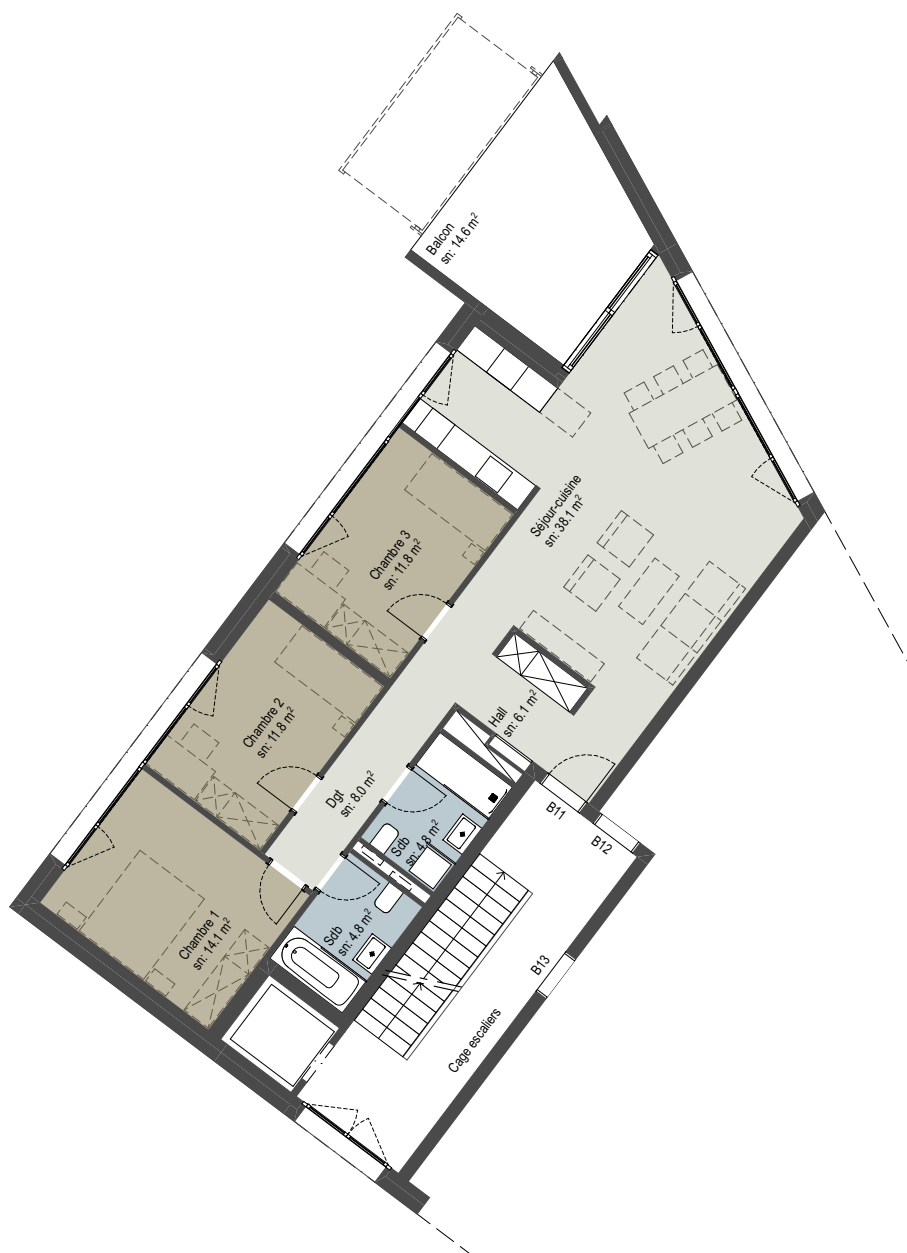
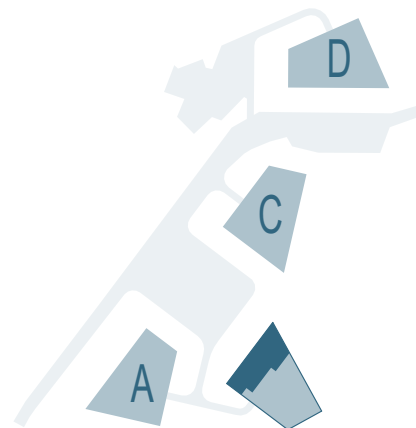


# RESIDENCES TANGRAM

APPARTEMENT n° **B11**

PIECES 4.5

SURFACE NETTE 99.50 m<sup>2</sup>  
SURFACE BRUTE 118.70 m<sup>2</sup>  
BALCON-TERRASSE 14.60 m<sup>2</sup>  
SBP + 1/2 balcon-terrasse 126.00 m<sup>2</sup>



B11  
juin 2020

0 1 5

