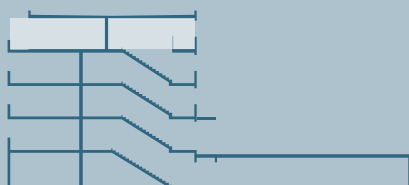
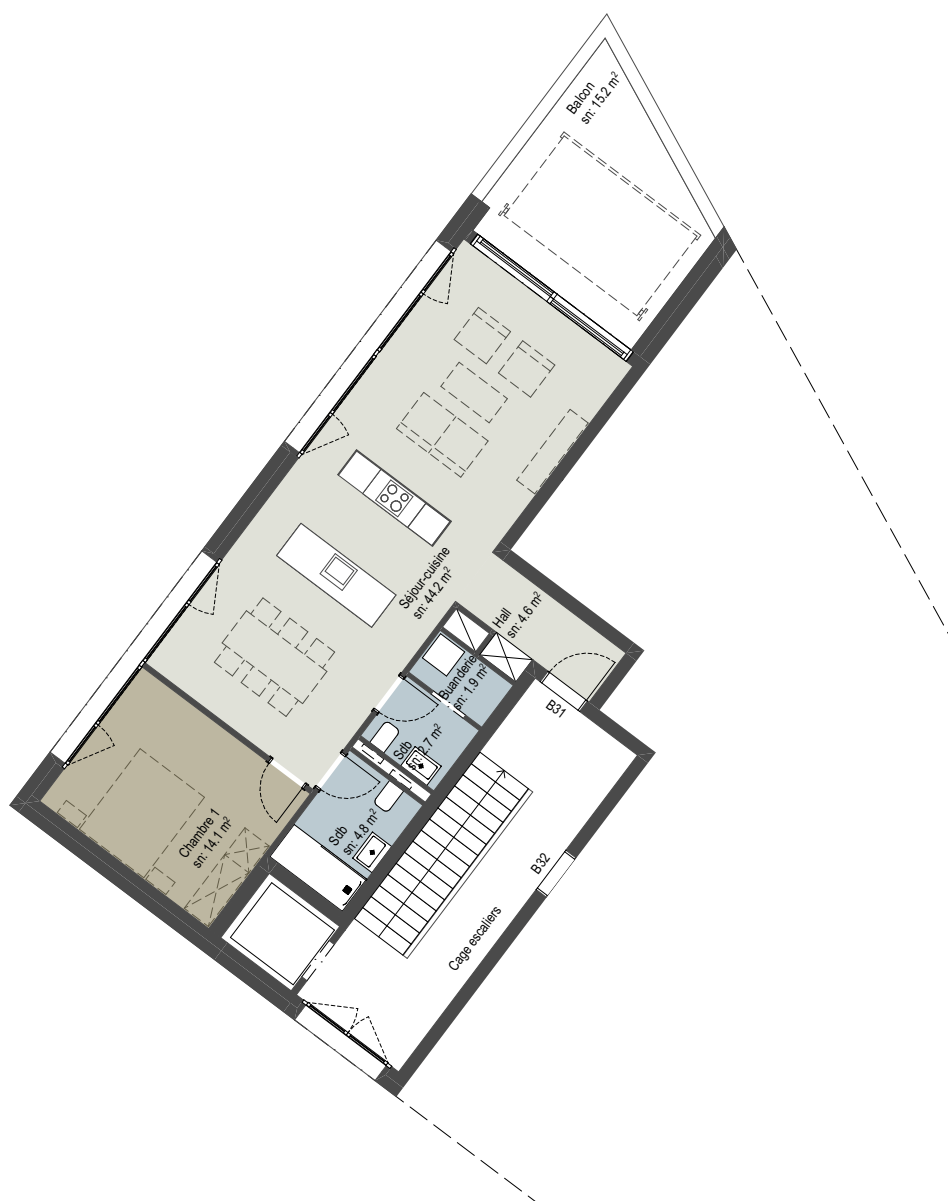
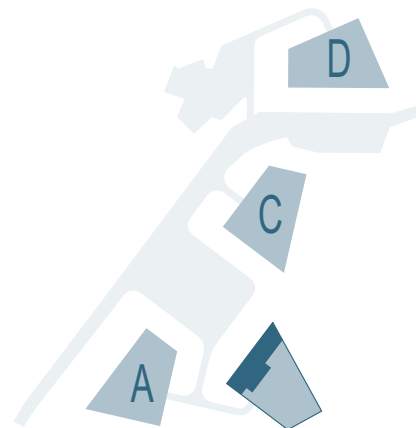


RESIDENCES TANGRAM

APPARTEMENT n° **B31**

PIECES 2.5

SURFACE NETTE	72.30 m ²
SURFACE BRUTE	86.40 m ²
BALCON-TERRASSE	15.20 m ²
SBP + 1/2 balcon-terrasse	94.00 m ²



0 1 5



B31
juin 2020