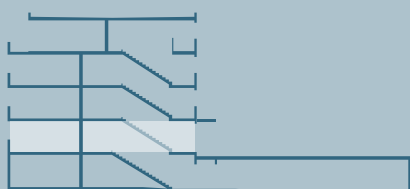
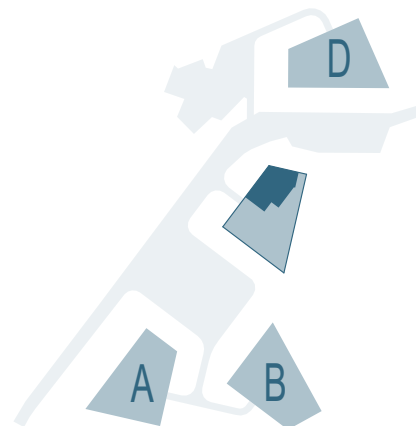


RESIDENCES TANGRAM

APPARTEMENT n° **C03**

PIECES 3.5

SURFACE NETTE	77.80 m ²
SURFACE BRUTE	92.15 m ²
BALCON-TERRASSE	14.30 m ²
SBP + 1/2 balcon-terrasse	99.30 m ²



C03
novembre 2020

0 1 5

