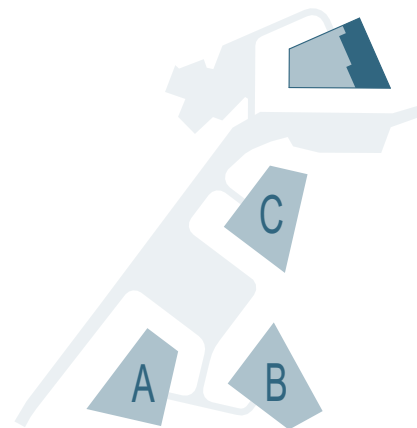


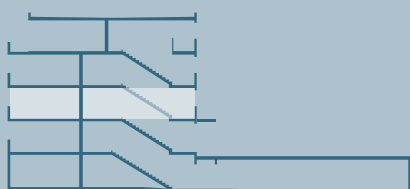
# RESIDENCES TANGRAM



APPARTEMENT n° **D11**

PIECES 4.5

SURFACE NETTE	100.00 m <sup>2</sup>
SURFACE BRUTE	118.85 m <sup>2</sup>
BALCON-TERRASSE	13.80 m <sup>2</sup>
SBP + 1/2 balcon-terrasse	125.75 m <sup>2</sup>



D11

novembre 2020

0 1 5

