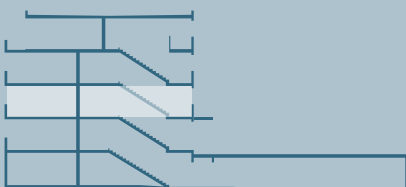
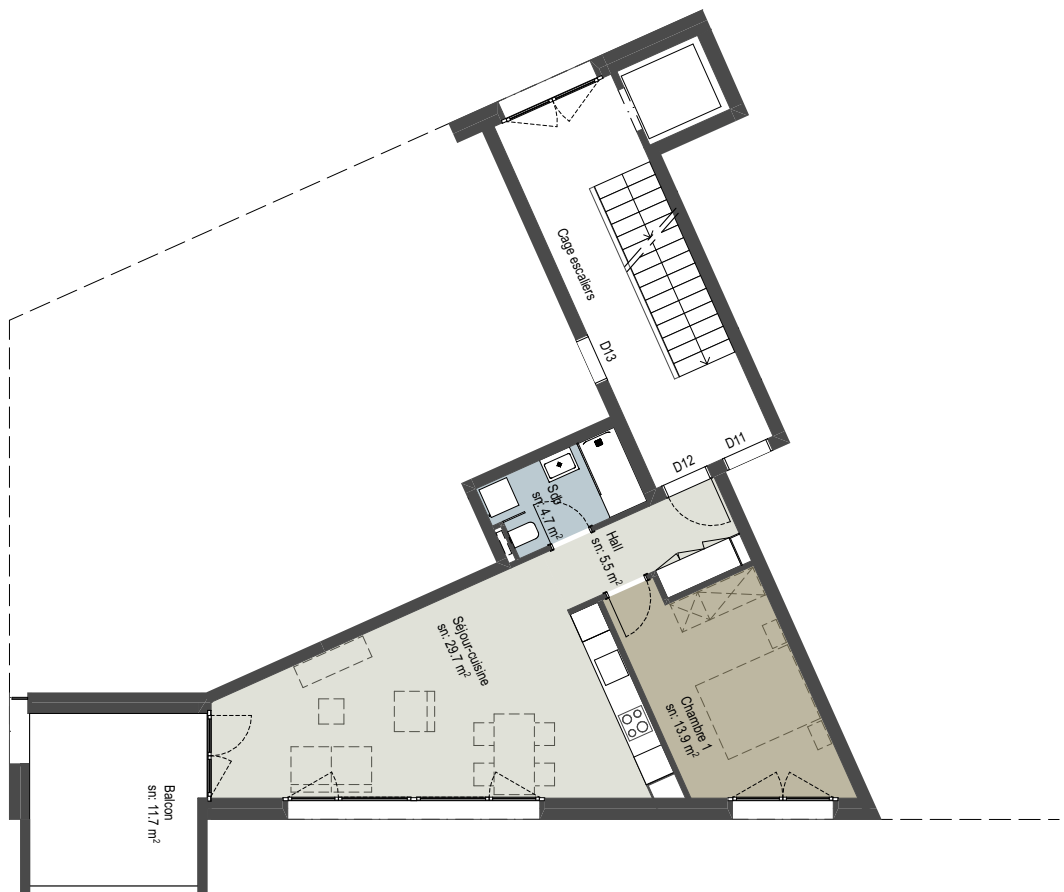
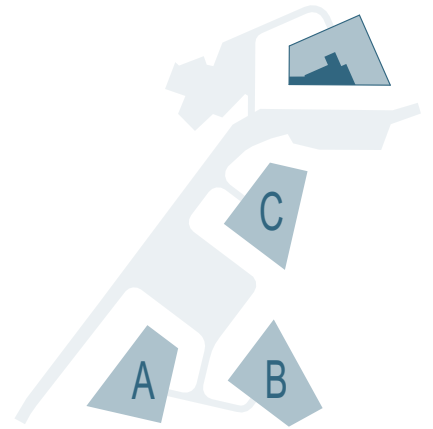


RESIDENCES TANGRAM

APPARTEMENT n° **D12**

PIECES 2.5

SURFACE NETTE	53.80 m ²
SURFACE BRUTE	64.65 m ²
BALCON-TERRASSE	11.70 m ²
SBP + 1/2 balcon-terrasse	70.50 m ²



D12

novembre 2020

0 1 5

