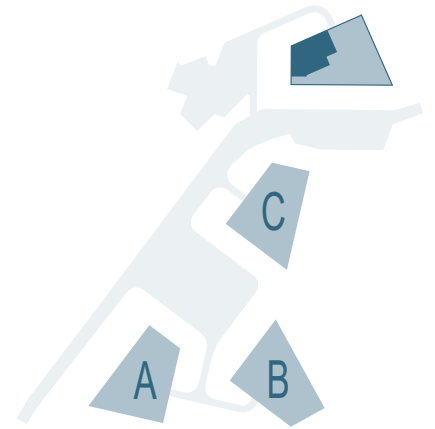


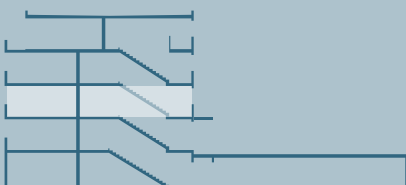
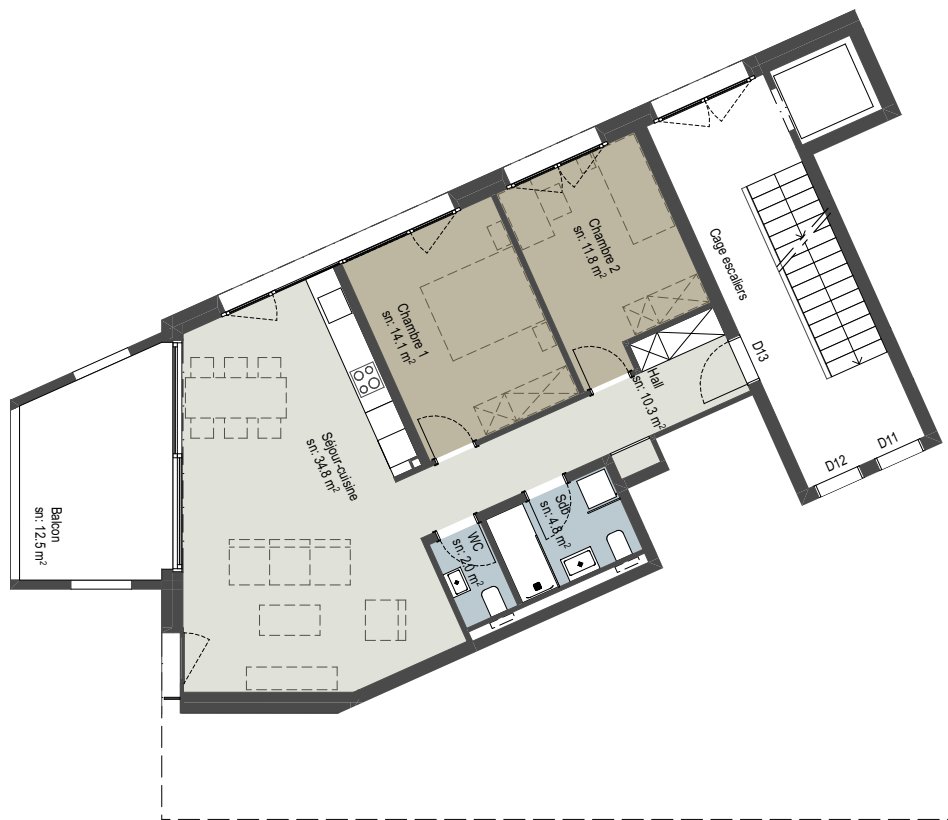
# RESIDENCES TANGRAM



APPARTEMENT n° **D13**

PIECES 3.5

SURFACE NETTE	77.80 m <sup>2</sup>
SURFACE BRUTE	92.15 m <sup>2</sup>
BALCON-TERRASSE	12.50 m <sup>2</sup>
SBP + 1/2 balcon-terrasse	98.40 m <sup>2</sup>



D13

novembre 2020

0 1 5

