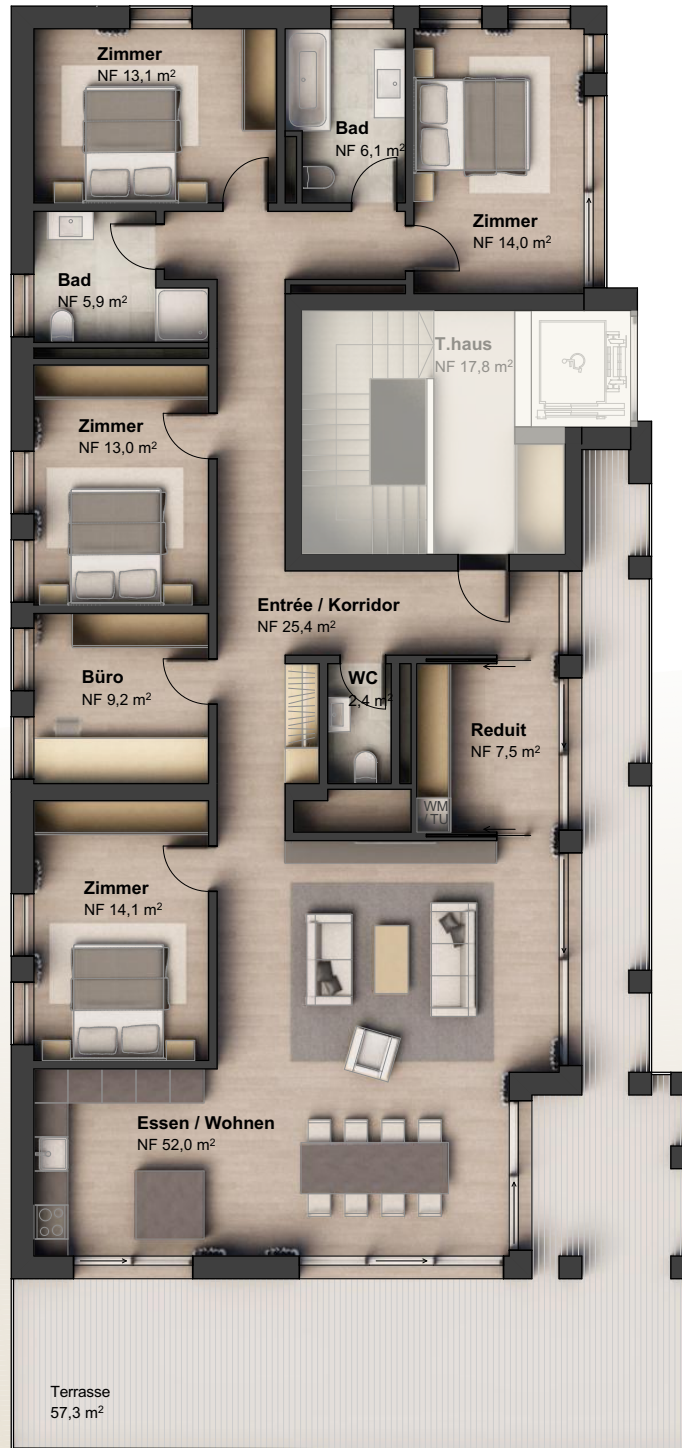
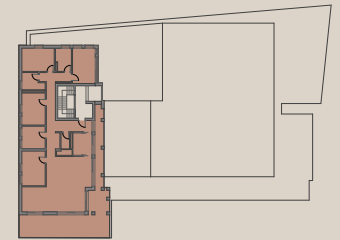


# Wohn-und Geschäftshaus «VISP CITY»



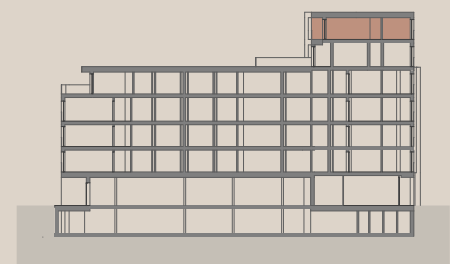
## 7.5 ZIMMER ATTIKAWOHNUNG

NR.39



### WOHNUNG 7 1/2 Zimmer

Anzahl Zimmer	7
Bruttowohnfläche in m <sup>2</sup>	201.9
Balkon (1/2) in m <sup>2</sup>	...
Terrasse (1/4) in m <sup>2</sup>	14.3



Schnitt