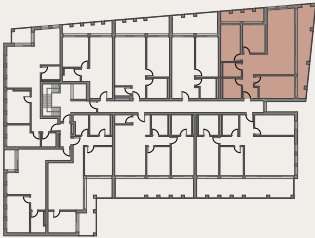


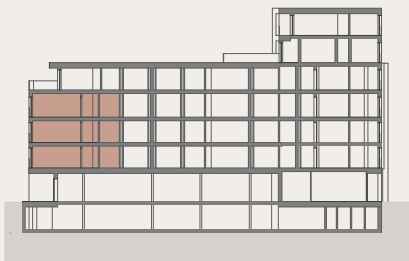
4.5 ZIMMER WOHNUNG

NR.9,18, 27



WOHNUNG 4 1/2 Zimmer

| | |
|------------------------------------|-------|
| Anzahl Zimmer | 2 |
| Bruttowohnfläche in m ² | 117.1 |
| Balkon (1/2) in m ² | 14.8 |
| Terrasse (1/4) in m ² | ... |



Schnitt

